

P.S.G. ENVIRONMENTAL GEO-EXPLORATION LTD

Project Development Company

**MINERAL EXPLORATION and
MINERAL RESOURCE EVALUATION**

<http://www.psgenvi.gr>



P.S.G. ENVIRONMENTAL GEO-EXPLORATION LTD

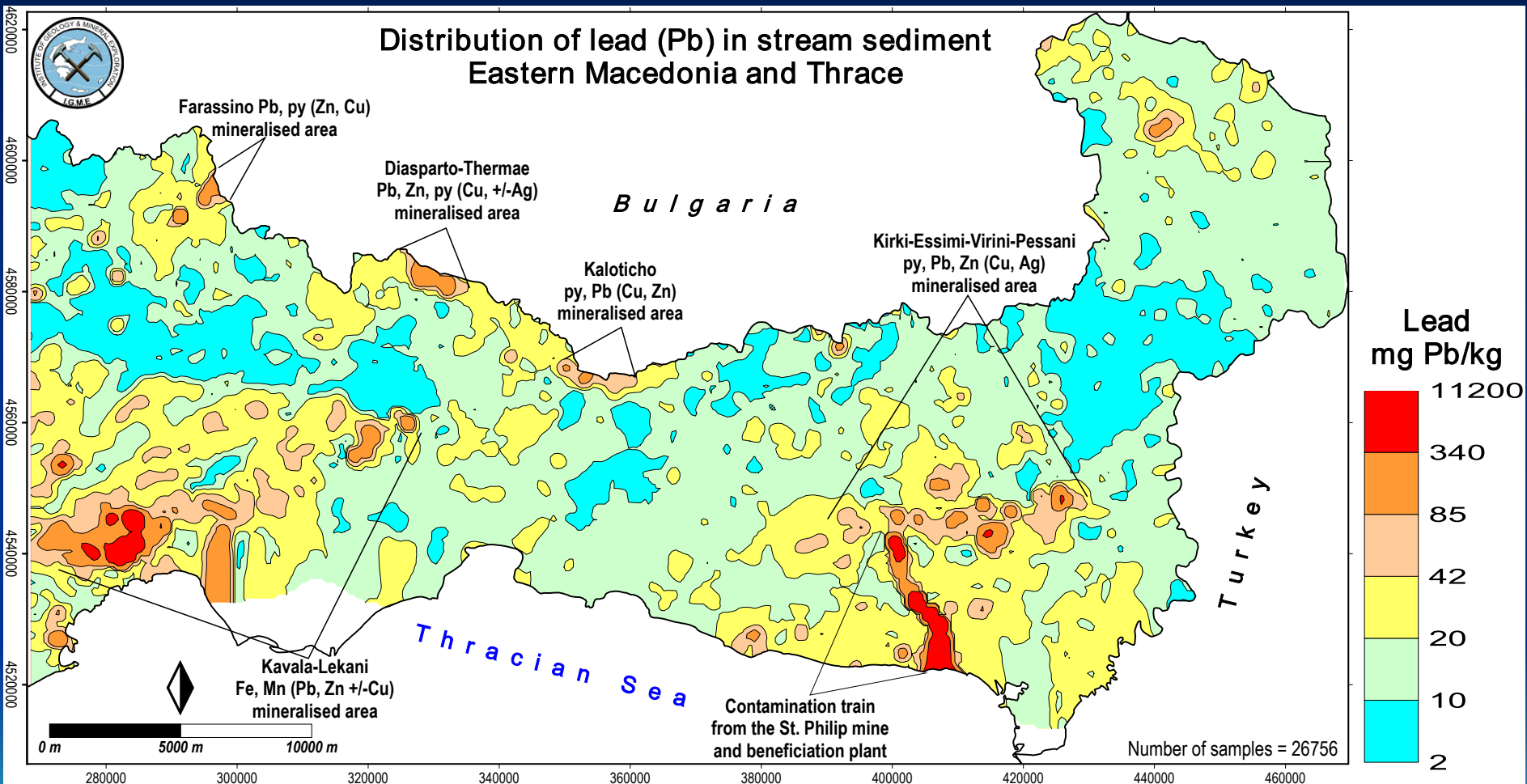
Our Dr. Penelope Stavrakis and EurGeol Alexandros (Alecos) Demetriades have worked for the Hellenic Institute of Geology and Mineral Exploration for many years, and have considerable experience in mineral exploration, mineral resource evaluation to the exploitation stage.

The examples that follow are from their work at the Institute of Geology and Mineral Exploration



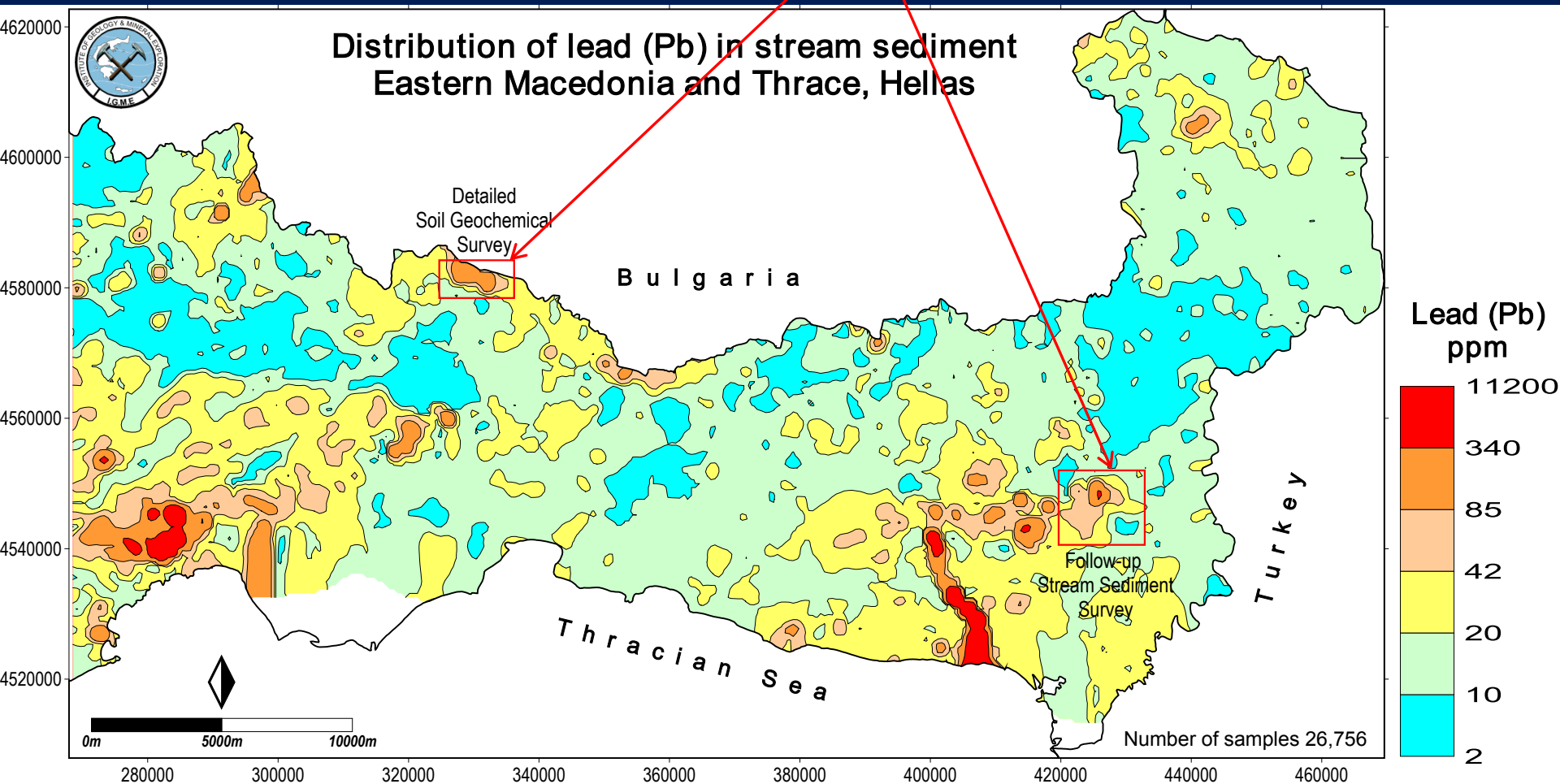


Regional Stream Sediment Geochemical Survey for the delineation of potential mineralised areas

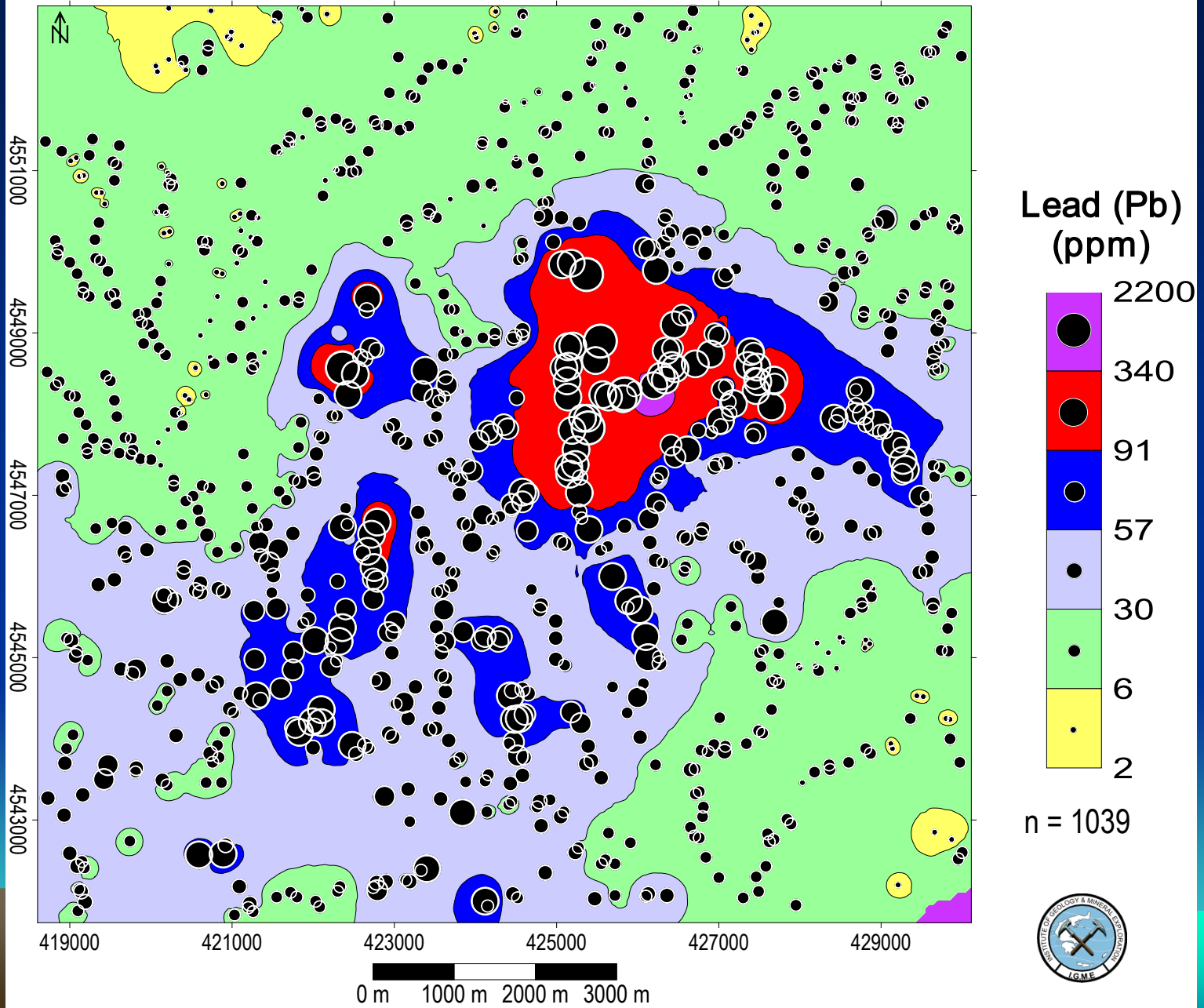




Selection of two areas for further exploration

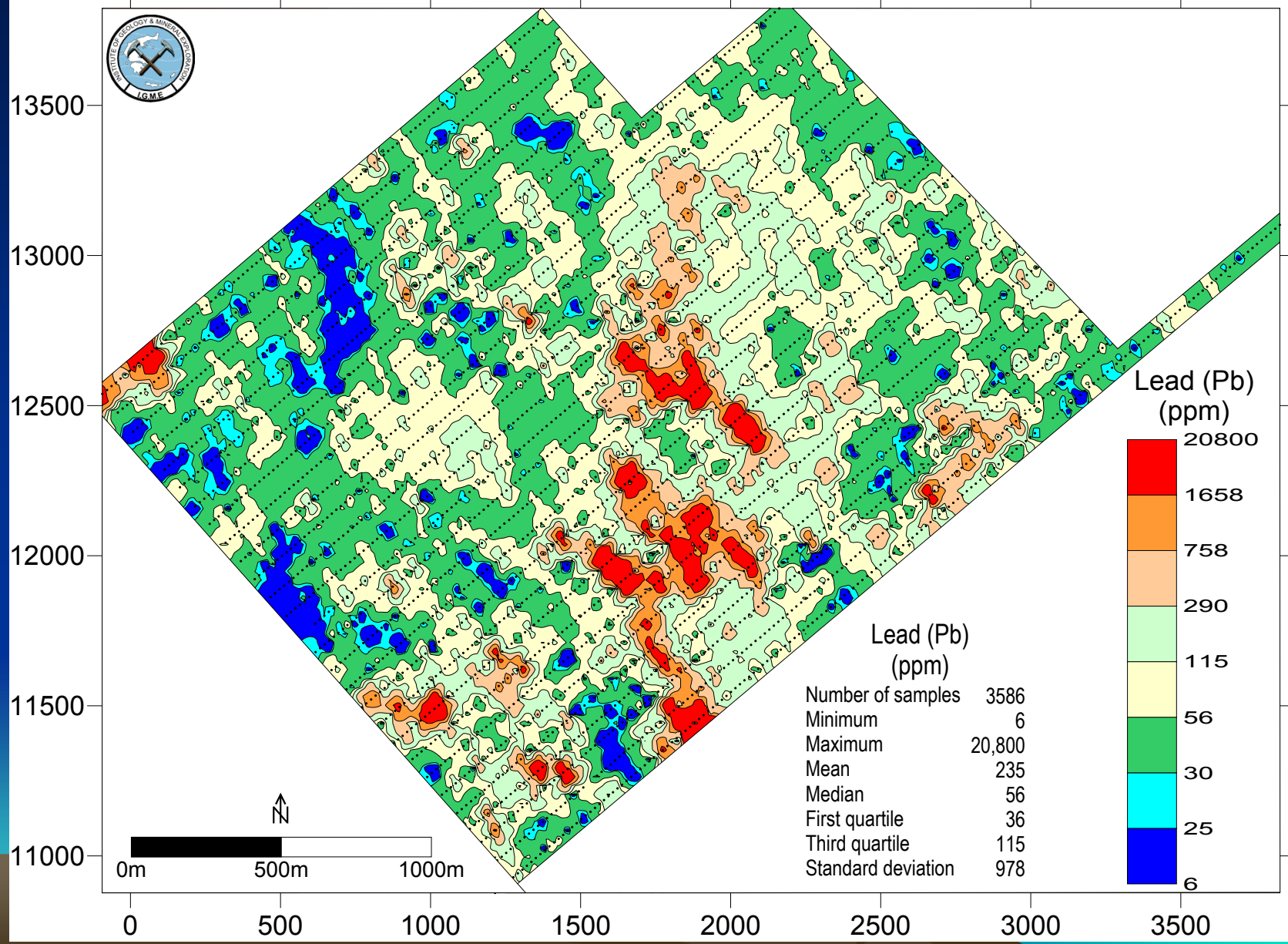


Follow-up stream sediment survey, Virini-Pessani area, Thrace, N.E. Hellas, for the delineation of potential mineralised structures





Detailed soil geochemical survey for delineating trenching and drilling targets, Thermae, Thrace, N.E. Hellas





P.S.G. ENVIRONMENTAL GEO-EXPLORATION LTD

Project Development Company

GEOPHYSICAL EXPLORATION

<http://www.psgenvi.gr>



P.S.G. ENVIRONMENTAL GEO-EXPLORATION LTD

Our Athanase Liosis (Geologist – Geophysicist) Assistant Project Manager in our company, has considerable experience in geophysical prospecting.

In addition, our EurGeol Alexandros (Alecos) Demetriades (Geologist-Mining and Exploration Geologist-Applied Geochemist) has experience in geophysical prospecting methods.





Resistivity tomography equipment



EM34 equipment



Gravity meter

Resistivity investigation for mineral exploration

Georadar equipment



Electromagnetic system equipment





Seismic investigations for mineral exploration





VLF investigation for mineral exploration





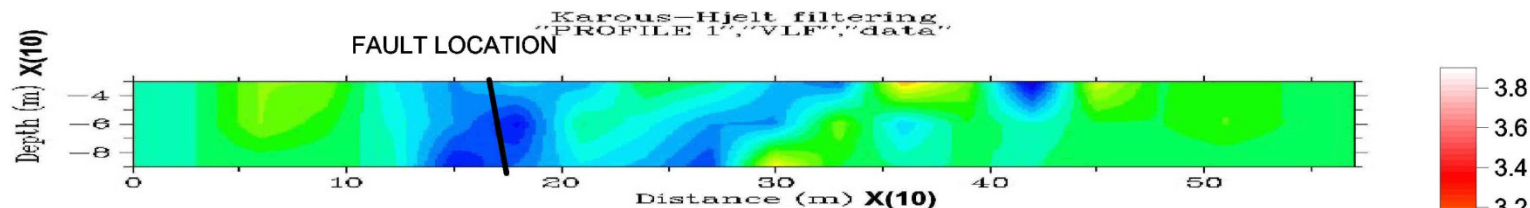
Resistivity investigation for mineral exploration



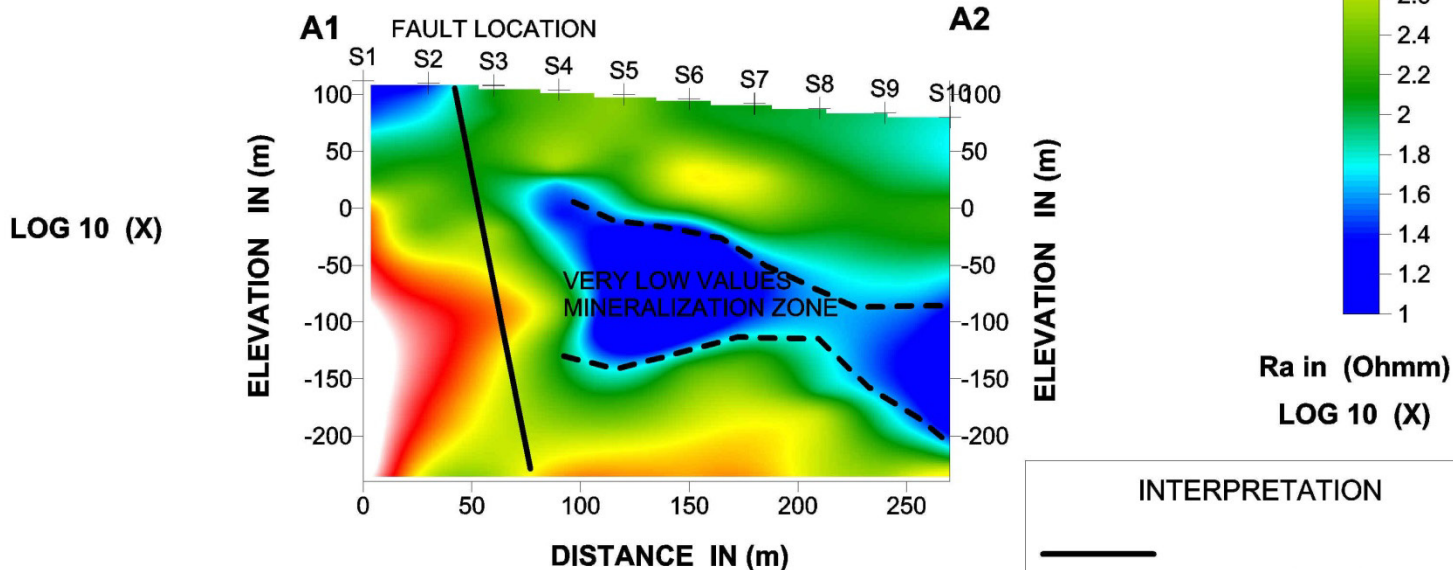


Resistivity cross-section 1 and VLF interpretation

GEOPHYSICAL PORFILE (1)



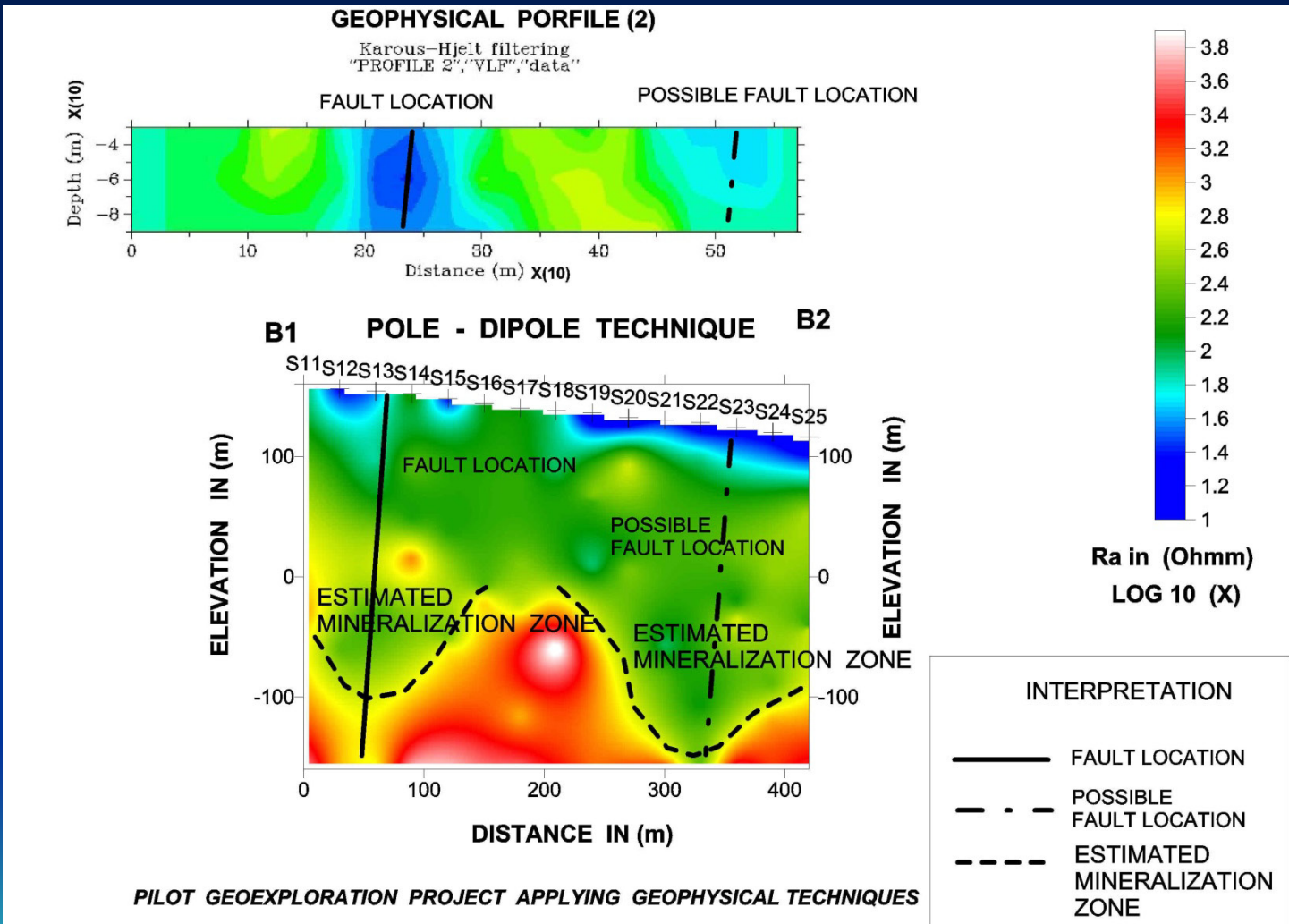
POLE - DIPOLE TECHNIQUE



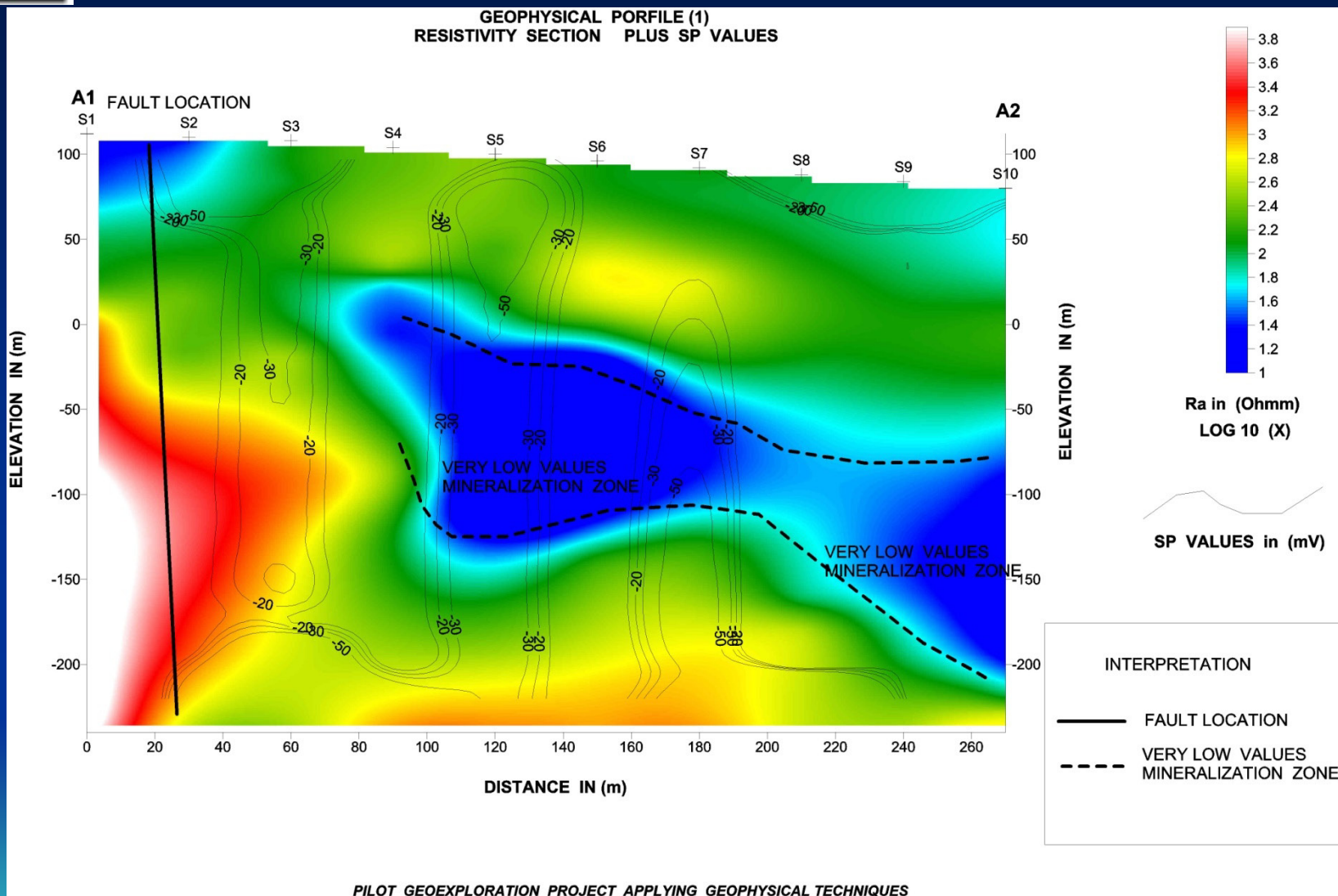
PILOT GEOEXPLORATION PROJECT APPLYING GEOPHYSICAL TECHNIQUES



Resistivity cross-section 2 and VLF interpretation

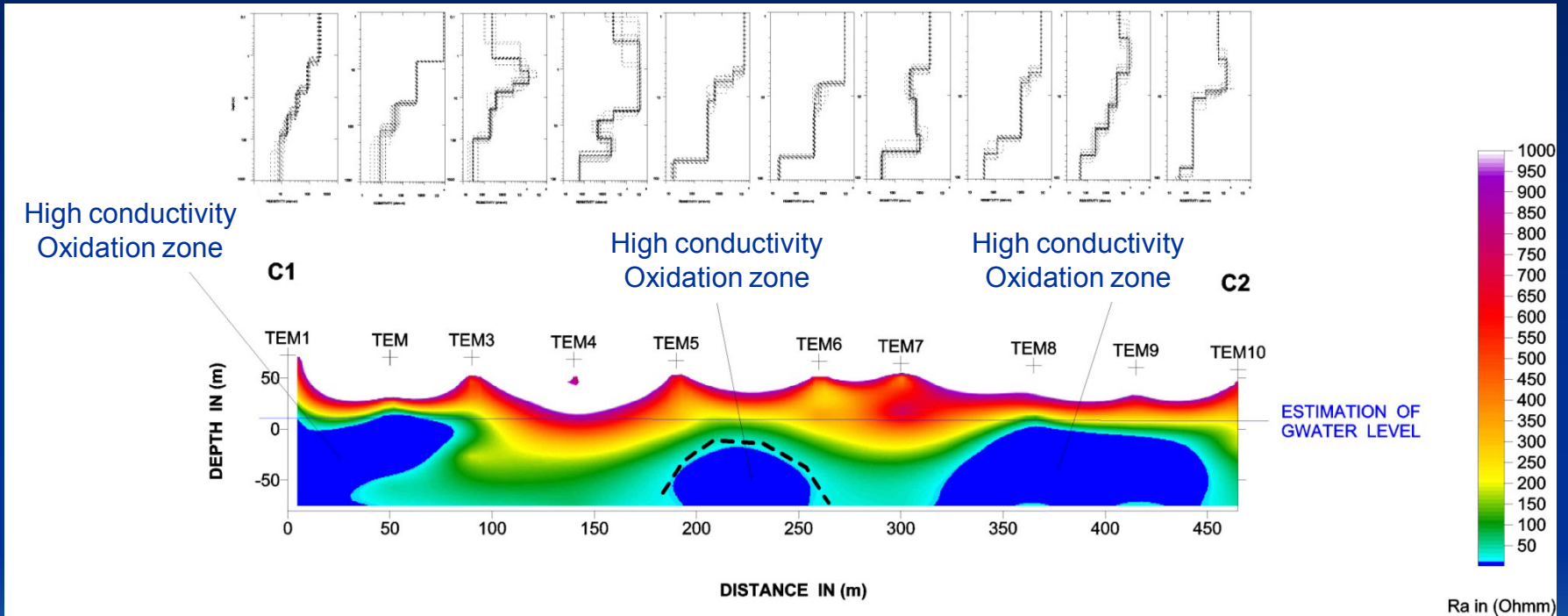


Resistivity cross-section 1 and SP values





TEM Resistivity cross-section plot





Seismic velocity profile

